

**Neighborhood Meeting**  
**January 19**  
 2832 Arsenal

# The Porch Review

BUILDING RELATIONSHIPS, PROMOTING COMMUNITY, WORKING FOR ALL



## BPWNA Board Information 2012

**W**elcome to 2012!  
 Many activities for YOU the resident are being planned. We would like YOUR input at the January meeting on January 19th. Please plan to attend.

The elected BPWNA board for 2012 are:

**President** - Linda Hennigh  
**Vice-President** - Carrie Sleep  
**Secretary** - Scott McIntosh  
**Treasurer** - Suzy Hennigh  
**Member at Large** -  
 Shirley Johnson  
 Amy Headrick

(Continued on page 8)

## Events

**Jan 3: BPWNA Board Mtg**  
 6:30p, Five Star Senior Center

**Jan 8: Bulk Trash Pickup Week**

**Jan 12: Weed & Seed (6:30)** Five Star, (7p) 3rd District Outreach

**Jan 19: BPWNA Neighborhood Meeting** - 7p, Five Star Senior Center

**Feb 7: BPWNA Board Mtg**  
 6:30p, Five Star Senior Center

**Feb 8: Weed & Seed (6:30)** Five Star, (7p) 3rd District Outreach

**Jan 16: BPWNA Neighborhood Meeting** - 7p, Five Star Senior Center

**Feb 18: MARDI GRAS**

## Coming to Cherokee - Spring 2012



Official Shakespeare Festival logo (Courtesy of the Shakespeare Festival STL)

## Shakespeare Festival

Provided by Minerva Lopez

**F**riends, Romans, countrymen, lend me your ears... Julius Caesar – (Act III, Scene II).

A message from the organizers of the Shakespeare Festival:

We are Shakespeare Festi-

val St. Louis, the company that performs terrific free Shakespeare plays in Forest Park each summer. We want to bring Shakespeare and Shakespeare adaptations to every part of the city of St. Louis, and we are starting with the Cherokee Street neighborhood.

## The Luminary

Provided by Jeff Vines

**S**ignaling a major investment in the Cherokee Arts District, The Luminary Center for the Arts is launching a capital campaign to purchase 2700 Cherokee Street, a 22,500 sq/ft former variety store

and renovate it into an incubator for art, music and cultural projects. The nonprofit arts center looks to bring its acclaimed programs and events

(Continued on page 4)



## BPWNA at Mardi Gras Booth - February 18th

IT takes YOU to help make the Fun Happen!

Staffing the beer booth is a fundraising event helps BPW can bring events such as the Easter Egg Event, movies, the newsletter, Trunk or Treat, Garden's, Beautification projects and many other things in the neighborhood.

Help out by having FUN with your neighbors for a 2 hour shift (or more).

Call the BPWNA office (314-771-0803) or Carrie Sleep (314-805-0152) to find out when **YOU can be Part of the FUN!**

### Inside this issue:

|                      |   |                      |   |                     |    |
|----------------------|---|----------------------|---|---------------------|----|
| Happy New Year!      | 2 | Information Corner   | 5 | When to Call 911    | 9  |
| YOUR ideas on Jan 19 | 2 | Help for Home Buyers | 7 | Calendar            | 10 |
| Jeanette Mott Oxford | 3 | NIP Form             | 8 | Happy New Year-SLPL | 11 |
| Book Club            | 5 | Seen Out and About!  | 8 | Recycle Dumpsters   | 12 |

## The Presidents Corner...



Linda Hennigh

## Welcome to 2012

## HAPPY NEW YEAR!!

**H**APPY NEW YEAR!! I want to thank all of our readers for helping to make the blocks bordered by Jefferson,

Gravois and Cherokee (known as Benton Park West) an even better place to call home. Crime is down, streets are cleaner, trees are being planted, organizations that provide help to the needy are only blocks away, even more shopping and restaurants are within walking distance.....but we still have much to do.

On the flip side of the coin, neighbors have lost their houses, some have lost

their jobs. The Benton Park West Neighborhood Association is small but has big heart and needs to hear from YOU! If you look at the list above and say, "but what about what I think is important?"....PLEASE, come to this month's neighborhood meeting. On Thursday, January 19<sup>th</sup> at 7:00pm, come to the Five Star Senior Center, Oregon and Arsenal, and tell me what YOU would like to see. This is YOUR neighborhood and we need YOUR ideas. (p.s. we will have refreshments and door prizes)

*Linda Hennigh, President*

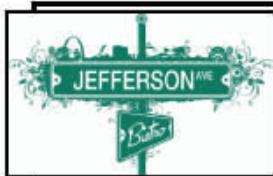
**Join us on January 19th at 7p (2832 Arsenal) and bring YOUR ideas about what you would like to see in your neighborhood for 2012!**

## Volunteer Opportunities

**Mardi Gras 2012 - February 18th.** Have fun with your neighbors and work the annual BPWNA Booth! Or come to Mardi Gras and support BPWNA by buying your beverages from US!

**Ideas for 2012 are NEEDED!** - Come to the Jan 19th meeting or call Linda Hennigh at (314-771- 2161) and share YOUR ideas for 2012

**THANK YOU FOR  
SUPPORTING  
LOCALLY  
OWNED**



## Jefferson Avenue Bistro

3701 S. Jefferson Avenue  
Saint Louis MO 63118  
314 - 664 - 1720

**Great food  
Great fun  
Great people**

6a - 1:30a Mon-Fri  
8a - 1:30a Sat  
9a - 12:30p Sun

\$2 breakfast specials  
\$4.95 lunch specials  
*No entree over \$9.95*

Check out our beautiful banquet room  
for private parties!

Find us on the web at [jeffersonbistro.com](http://jeffersonbistro.com)

Check-us out on Facebook

## 2012 Board

**Linda Hennigh** - President  
771-2161(h) [linda\\_hennigh@yahoo.com](mailto:linda_hennigh@yahoo.com)

**Carrie Sleep** - Vice-President  
805-0152(c) [cesleep@yahoo.com](mailto:cesleep@yahoo.com)

**Suzanne Hennigh** - Treasurer  
580-8580(c) [shennigh@live.com](mailto:shennigh@live.com)

**Scott McIntosh** - Secretary  
719-6507(c) [scottwmcintosh@yahoo.com](mailto:scottwmcintosh@yahoo.com)

**Amy Headrick** - Member at Large

**Shirley Johnson** - Member at Large  
[muchhumility@yahoo.com](mailto:muchhumility@yahoo.com)

**Block Link**  
[bpwnapub@yahoo.com](mailto:bpwnapub@yahoo.com)

### Dog Park -

Shannon Kenny  
([srdogfostering@aol.com](mailto:srdogfostering@aol.com))

Mandy Mankin  
([mandy.mankin@wellpoint.com](mailto:mandy.mankin@wellpoint.com))

Bill Byrd - Facilities  
[bpwnabill@yahoo.com](mailto:bpwnabill@yahoo.com)

**Rolanda Johnson** - Membership  
[bpwnamembership@yahoo.com](mailto:bpwnamembership@yahoo.com)

Bill Byrd - Communications  
[bpwnapub@yahoo.com](mailto:bpwnapub@yahoo.com)

**Pam Welsh** - Youth  
[pwelsh@epssg.com](mailto:pwelsh@epssg.com)



BPWNA is a 501(c)3 organization  
registered with US IRS and  
Missouri Secretary of State.

A Publication of  
The Benton Park West  
Neighborhood Association

**Design/Editor:** Bill Byrd

**Proofreaders:** Kenneth Pruitt and Linda Hennigh

**Contributing Writers:** Linda Hennigh, Bill Byrd,  
Jeannette Mott-Oxford, RJ Johnson, Erin Guss, Jeff  
Vines, Minerva Lopez

**Contributing Photographers:** Bill Byrd and Jeff Vines

**Benton Park West Neighborhood Association**

P.O. Box 18671  
St. Louis, MO 63118  
Phone: 314-771-0803

E-mail: [info@bentonparkwest.org](mailto:info@bentonparkwest.org)  
On the Web at: [www.bentonparkwest.org](http://www.bentonparkwest.org)

**Advertising Information:**  
[bpwnapub@yahoo.com](mailto:bpwnapub@yahoo.com) or 314.771.0803.

**Advertising and Editorial deadline:** The  
5th of each month.

## Government Does Some Things Well – And We Should Always Be Working To Improve Our Record

As the New Year begins, confidence in the Missouri General Assembly rivals all-time lows. One factor in this is the failure of last fall's Special Session to pass legislation to address our high unemployment numbers – a story covered vigorously (if not particularly thoroughly or accurately) by media in every corner of the state. Another factor is dissatisfaction with partisanship in federal government – where polarization between the political parties has led to a series of high stakes showdowns. Not knowing whether government would shut down or whether the payroll tax reduction would last has frayed the nerves of people of every political stripe (but especially alarming our most vulnerable citizens – senior citizens, people

with disabilities, and low-wage workers). How voters feel about federal legislators often carries over to their opinions of those of us in statewide or even city/county offices.

With all the negative focus on government, we forget that systems put in place by governments and funded by taxpayers accomplish a lot of good in our world. For example:

Poverty among those who are elderly or disabled has been greatly reduced by the Social Security Act.

Due to restaurant and water system inspections, we can almost always trust that what we eat or drink from public sources will be safe.

Police, fire fighters, and emergency medical responders save many lives – often at the risk of their own.

The Special Supplemental Program for Women, Infants, and Children (WIC) prevents low-birth weight births and nutritional illnesses. Seeing children grow up strong and healthy is the best part of the program for WIC parents, of course, even though the program is a huge economic success too. (We save four dollars in health care costs for every dollar spent on food in WIC.)

I consider advances in fighting hunger and malnutrition to be a great success story for government. In 2011, I was pleased to write a letter of support for Missouri to receive a grant from the U.S. Department of Agriculture (USDA). The number of children receiving a food benefit from the grant will quadruple from 2,500 children to 10,000, thanks to a successful outcome for Missouri's application. This will mean a \$2 million investment in Summer 2012 –

Jeanette Mott Oxford,  
59th District

314-771-8882 (home)  
573-751-4567 (office)  
[jeanette.oxford@house.mo.gov](mailto:jeanette.oxford@house.mo.gov)



\$1 million for St. Louis and \$1 million for the Kansas City area – and the program will also generate substantial local economic benefits for grocers, farmer's markets and other food retailers.

The Legislative Session that begins January 4 will contain many challenges, especially in how to fund the state budget in these tough economic times. As I begin my final year as your state representative (I cannot run for re-election due to term-limits), please know that I am committed to doing all I can to improve government programs and to demand transparency and accountability. You can follow legislation that has been introduced, including my bills, by going to [www.house.mo.gov](http://www.house.mo.gov). You may also sign up to receive periodic updates about important issues by writing me at [jeanette.oxford@house.mo.gov](mailto:jeanette.oxford@house.mo.gov).

I wish you and your loved ones a healthy and peaceful 2012 full of meaningful accomplishments!



314-865-1211

### AUTO BARGAIN CENTER USED CARS AND TRUCKS

BOB QUINN  
Owner

2700 Gravois  
St. Louis MO 63118

### Park West Grille 2917 S. Jefferson

Happy Hour – 5-7p - \$1 off everything  
**Daily Specials!**

Mon - \$3 Margaritas    Wed - \$3 Cosmos  
Thurs - \$5 Long Island    Fri - \$1 Select Martinis  
Sat - \$4 Bombs



**Kakao Chocolate**  
2301 S. Jefferson Avenue  
St. Louis, MO 63104  
314-771-2310

Artisan Chocolates • Locally Roasted Coffee  
Lattes and Cappuccinos with House-Made Syrups

Open Tuesday - Friday, 7 a.m. to 6 p.m.  
Saturday 9 a.m. to 4 p.m.



## Cherokee...

# Luminary coming....

Continued from page 1

to one of the area's most active communities as a way to strengthen the street as a burgeoning cultural hub and increase its ability to serve the creative community of St. Louis.

Since opening in 2007, The Luminary has quickly developed into a world-class cultural organization, presenting artwork in the collection of MoMA and The Guggenheim, launching numerous acclaimed projects with international reach and attracting residency applicants from 15 countries across 5 continents. The Luminary's new permanent location will be a unique asset in the region as an incubator for emerging artists, bringing together diverse resources and public events into one fluid location. The building will include expanded gallery and venue space, housing and studios for artists-in-residence, open work space for the artist equipment library, classrooms, offices and creative retail.

The Luminary's Directors,

James and Brea McAnally (Benton Park West residents), describe the move as "an investment in the growing potential of the St. Louis creative community." The campaign's slogan-New ideas use old buildings-underscores The Luminary's commitment to the next wave of the arts in the area. They mark the importance of Cherokee street as well, stating that "the Cherokee arts district is one of the most promising communities in the region- it is a diverse urban neighborhood that is already home to many artists, musicians and creative entrepreneurs. At the same time, it is a tenuous region in which we feel like we can play a role in creating a stable future within the community." The plans have elicited wide support from the community after initial discussions with business owners and residents of the street. Mayor Francis Slay has lent his support to the ambitious project, saying that "The Luminary's mission enables artists to grow and refine

their talents, helping to ensure the future growth of St. Louis's creative class. I stand in support of their organization as they work to raise the necessary funds to make this a reality."

The Luminary has embarked on a large-scale fundraising process with the goal of securing funding by March 31st, with a projected open date of Fall, 2012. Seed funding is already in place and a wide number of individuals and businesses have pledged support. The Luminary will also be utilizing the crowd-funding platform Kickstarter to mobilize its active community of supporters

through many small gifts. The new location promises to be a unique addition to the already diverse cultural landscape of the city, filling a need for more resources for emerging and midcareer artists in the area and helping attract a nascent creative community to the region.

For more info, go to [Luminary Capital Campaign for New Permanent Location](http://LuminaryCapitalCampaignforNewPermanentLocation)

Or contact:  
James McAnally, Executive Director  
Email: [director@theluminaryarts.com](mailto:director@theluminaryarts.com)  
Phone: [314-807-5984](tel:314-807-5984)  
Web: <http://theluminaryarts.com>



## Music House

Karaoke - Fri. & Sat. Nights  
Keno All MO. Lotto Tickets  
Packaged Liquor

314-776-0996 or onenitestand-

2800 Ohio Ave at Gravois  
St. Louis, MO 63118

**ROGER & KATHERINE**  
**PROPRIETORS**

Hours:  
12:00 Noon to 1:30am  
Mon - Sat.

*A focus on wellness.  
A focus on you.*

More than a massage studio,  
Indigo specializes in total wellness.  
Licensed Massage Therapists  
provide personalized service,  
tailored to fit your needs.

- Therapeutic Massage
- On-site Chair Massage
- Hot Stone Massage
- Yoga Classes & more

**indigo**  
massage & wellness therapy

314-276-9882 - [indigomassagetherapy.com](http://indigomassagetherapy.com)  
3030 Jefferson Ave. in Benton Park - gift certificates available



Located in Historic Benton Park  
2901 Salena St

**Deli Sandwiches - Custom Smoked Meats**  
**Dairy, Beer, Wine**  
**Smoked Brisket and Pork**  
**Pies and Cakes, whole or by the slice**

**Daily Lunch and Dinner Specials**

OPEN MON-SAT 11:00am-8:00pm  
Closed Sunday - EBT Accepted

314-776-2331

[www.pointersmarket.com](http://www.pointersmarket.com)



## Community Information Corner

**St. Wenceslaus Trivia Night –**  
5th Annual – Saturday, February 11, 2012. Doors open at 6:15pm. Trivia begins at 7:00 p.m. in the Parish Hall (school basement) at 3022 Oregon Ave. (corner of Oregon & Arsenal.) The hall is handicapped accessible. Cost is \$20/person or \$160 per table of eight. Ten Rounds of Ten Questions; Soda & Water; Beer & Wine; Popcorn & Pretzels provided. B.Y.O.B. and food. Also featuring: Basket Raffle; Other Prizes & Games. Questions and reservations: by Feb 6th - Call Kathy Styer at 314/588-0770.

### What's Working in St. Louis Neighborhoods?

*February Session: Focus on Rental Housing*

**When: 12:00-1:15 p.m.,  
Wednesday, February 1, 2012**

**Where: Room 202, J.C. Penney Conference Center, University of Missouri-St. Louis**

**FREE and open to the public. FREE parking is available in Lot C.**

Join us for a series of conversations with leaders of St. Louis area CDCs, explor-

ing how they are making a difference in their neighborhoods. Panelists include Tom Pickel, Exec Dir, DeSales Community House Corporation. *Bring your lunch. Drinks will be provided.*

### HEARD about Town

- Farm to Family will proceed as planned on a food processing and distribution center and store in Lafayette Square located at or near the former Food Land Building on Jefferson. The facility has a targeted opening date of summer 2012.
- WITS Inc. will gladly recycle electronics, office furniture, TV's, home electronics, etc. that you may no longer need. Contact WITS at 314-382-1650 for more information.

## Food Pantries in 63118

Guardian Angel at Ho-sea House Social Services 2635 Gravois Ave. St. Louis, MO 63118 314-773-9027

Joint Neighborhood ministry, McNair 2911 McNair Ave. St. Louis, MO 63118 314-771-3987

Metro Christian Worship Center Brothers Keepers Benevolence 3452 Potomac St. St. Louis, MO 63118 314-772-8444

The Salvation Army Temple Corps Worship & Community Center 2740 Arsenal St. St. Louis, MO 63118 314-771-3460

## Neighborhood Book Club

**January 30th- Embassytown by China Mieville**

If you want to get an invite every month e-mail me, [rebeccadurst@gmail.com](mailto:rebeccadurst@gmail.com) or you can call me at 314-853-1091.



## Rich's Automotive and Truck Repair

Independently owned  
& operated

Full Service Automotive & Truck Repair  
All Major & minor automotive & truck repairs  
ASE Certified Technicians – Proud Member AASP

Certified Clean Air Emission Repair Center  
Missouri State Inspection Station  
*Gateway Clean Air & Emission Facility*

Free Shuttle service  
(within a reasonable distance)



**Open Mon-Fri 8-5.  
3700 Michigan at Winnebago  
314 – 771 – 2500**

*Over 75 years of combined mechanical experience*  
**Over a decade of service  
to South St. Louis!**

## Five Star Senior Center

Ph.314-664-1008

Fax.314-865-2900

E-Mail [fcoac@swbell.net](mailto:fcoac@swbell.net)



Meals-Transportation

Social Activities

Mon.-Fri. 9:00-3:00

**2832 Arsenal St. Louis, MO 63118-2317**

Michael W. Howard

Executive Director

## Roll your old 401(k) without taxes or penalties.

**Mary E Cox, AAMS®**  
Financial Advisor

1908 Park Ave  
St Louis, MO 63104  
314-577-0167

Member SIPC  
[www.edwardjones.com](http://www.edwardjones.com)

**Edward Jones®**  
MAKING SENSE OF INVESTING



## Membership Needs YOU!

Call 771.0803 for more info.

See page 12 for an application

### Business Members

Auto Bargain Center  
Dr. Darrell B. Carroll  
Cherokee Station Business Association  
Clowder House Foundation  
Dutchtown South Community Corporation  
Edward Jones - Mary Cox  
Franciscan Connection  
Five Star Senior Center  
Indigo Massage  
Jefferson Avenue Bis-

Kakao Chocolate  
Lafayette Park  
Luvy UMC  
Duvy's Sons  
Near South-

side Employment Coalition  
One Nite Stand  
Park West Grill  
Pointer's Market  
ReMax - Connie Petty  
Rich's Automotive and

Truck Repair  
SLPD  
3D Partner-ship  
SSDN  
St. Frances Cabrini Academy  
The Salvation Army

### General

Pamela Atchley  
Ivan Cason  
Michelle Cason

Jason Deem  
Mark Esparza  
Barry Gilbert  
Virginia Gilbert  
Shannon Headley  
Amy Headrick  
Suzanne Hen-nigh  
Rolanda Johnson  
Brian Kenney  
Whitney Mathison

Cindy Monti

Gerry Monti

Erica Nuyen

Mark Nuyen

Amanda Oncken

Christian Oncken

Judith K. Rabin

Gwen dodyn Robinson

Christina Sullivan

Michael Sullivan

Antonia Valentine

Josh Welsh

Pamela Welsh

Sherry Young

Senior

John Coleman

Roma Coleman

Mercedes Dickerson

**Will your name be on this page in February?**  
**\*See membership application on the back page**

## Become a member TODAY!

Mail the application, on page 12, and your check: BPWNA, PO Box 18671, Saint Louis MO, 63118.

### City, State and Federal officials, Friends of BPWNA

Jennifer Florida - Alderwoman, 15th Ward

Dena Hibbard - NSO\*

Ken Ortman - Alderman, 9th Ward

Craig Schmid - Alderman, 20th Ward

Judy Lane - NSO\*

Barb Potts - NSO\*

\*Neighborhood Stabilization Officer



## Movie and a Bite *Mooz-Lum and Spiros Greek Restaurant*

by RJ Johnson, The Porch Reviewer

### Mooz-Lum

Tariq is a young boy at the mercy of his father's unyielding stance to send him to a boarding school under Islamic tutelage. Tariq subsequently endured the brutality of an abusive instructor. Although, his mother's intuition sensed his despair her efforts to intervene were unsuccessful. The will of Tariq's father surmounts and Tariq is again removed from his mother's protection. Tariq's struggles with his faith stemmed from many

negative boyhood experiences, which impacted his view of Islam.

The movie transitions to Tariq as a young college student where he continues to be haunted by his past. Over the years Tariq remained silent about his childhood torment. However the horrific events of 9/11 opened his eyes. The judgments Tariq placed on his entire religion due to the bad acts of a few individuals, were the same judgments that were now directed toward him after the tragedies

of 9/11.

The movie overall was just okay – the characters were better than the actual storyline. Evan Ross gave a compelling portrayal of the longsuffering Tariq; and I have been a big fan of Nia Long (who played his mother) for years. However, the film was a little difficult to follow because of the flashback technique used to tell the story (particularly in the beginning). There were also various sub-stories which were choppy and confusing. Nevertheless, it

might be worth checking out on DVD.

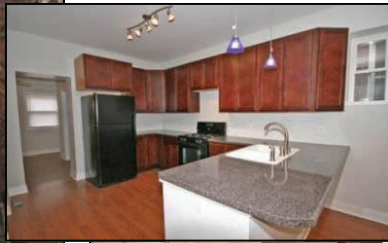
and after the movie . . .

A Bite . . . **Spiros Greek Restaurant**, 3122 Watson, St. Louis, 63139

The beautiful thing about BPWest is that the neighborhood is so close to a multitude of wonderful eateries. Drive straight down Arsenal St. and in just minutes you will arrive at a cozy family owned Greek restaurant with a wonderful staff. The Baklava is excellent!! Support local busi-



## BPW Real Estate - BPW

3129  
Oregon

[http://www.cbgundaker.com/propertydetail.jsp?mls\\_num=11054931&type=res](http://www.cbgundaker.com/propertydetail.jsp?mls_num=11054931&type=res)

**F**antastic full gut rehab in Benton Park West boasts a re-designed floor plan for maximum use of living space and functionality! Gorgeous new kitchen boasts lots of dark maple cabinetry, tons of counter space, breakfast bar, pendant lighting and all new appliances. Large living & dining rooms on main floor and a half bathroom! All new drywall, flooring, lighting, electrical, plumbing, HVAC. Master bedroom upstairs features beautiful master bathroom w/ceramic surround shower, huge adult height vanity & ceramic flooring! 2nd bedroom, upstairs & another full bathroom including tub/shower. Both bedrooms have large walk in closets! You will love having the laundry on the 2nd floor! Nice backyard is fully fenced!



**A REALTOR®  
Resource Forum**

*Your business in 2012 may depend on it!*

*Hosted by:*

- The Community Development Administration
- U.S. Bank Home Mortgage

*Featuring:*

- Beyond Housing
- Justine Petersen

**Tuesday, Jan. 17, 2012  
11:00 am – 1:00 pm**

**5 Star Senior Center**

2832 Arsenal (just east of Gravois)  
St. Louis, MO 63118

A light lunch  
and refreshments  
will be served.

To attend this **FREE** event, or for more information:

Please RSVP to Matt Sisul at 314-622-3400 x322  
or email [sisulm@stlouisacity.com](mailto:sisulm@stlouisacity.com)



# TEACHING the WORLD in South St. Louis

At St. Frances Cabrini Academy, education is more than just reading, writing, and arithmetic.

It is a curriculum tailored to meet the needs of each child.

It is a compassionate and dedicated faculty of certified professionals.

It is a partnership between students, parents, and teachers.

It is a truly diverse community that respects and learns from other cultures.

At St. Frances Cabrini Academy, education is about our children, our families and our community.

We hope you can join us.

**(314) 776-0883**

**[www.cabriniaacademy.com](http://www.cabriniaacademy.com)**

At the corner of Arsenal & Oregon  
(one block from Gravois)

**Now Enrolling  
Kindergarten - 8th Grade  
Call for a tour!**



**St. Frances  
CABRINI  
ACADEMY**

# NIP Form

## Nuisance Identification Program form

Date: \_\_\_\_\_

Address: \_\_\_\_\_

### Problems:

- |   |                                       |
|---|---------------------------------------|
| <input type="checkbox"/> Drugs                        | <input type="checkbox"/> Prostitution |
| <input type="checkbox"/> Gangs                        | <input type="checkbox"/> Firearms     |
| <input type="checkbox"/> Theft                        | <input type="checkbox"/> Assault      |
| <input type="checkbox"/> Abuse                        | <input type="checkbox"/> Vandalism    |
| <input type="checkbox"/> Noise                        | <input type="checkbox"/> Loitering    |
| <input type="checkbox"/> Drinking                     | <input type="checkbox"/> Traffic      |
| <input type="checkbox"/> Graffiti                     | <input type="checkbox"/> Lighting     |
| <input type="checkbox"/> Overcrowding                 |                                       |
| <input type="checkbox"/> Trash/illegal Dumping        |                                       |
| <input type="checkbox"/> Building Violations          |                                       |
| <input type="checkbox"/> Unsecured Abandoned Building |                                       |
| <input type="checkbox"/> Overgrown Weeds/Grass/Shrubs |                                       |

Other problem areas or people:

---



---



---

Do you wish to have an officer contact you? YES NO

If Yes, please include your name and phone number:

---



---

*Return by any of the following:*

Bring to the Weed & Seed meeting each second Thursday at 6:30p to Weed & Seed - 2832 Arsenal, Five Star Senior Center

Mail to: BPWNA, PO Box 18671, St. Louis MO 63118

## Seen Out and About!



## On Cherokee

Thanks to Jeff Vines for "Noticing"

Checkout one of the newest sites on Cherokee Street - STyLehouse unveiled its latest curbside improvement— a colorful, custom bike rack designed and installed by Wheeler Welding. This bike rack is a reflection of commitment to Cherokee Street and promoting alternative transportation accessibility in St. Louis.

## BPWNA Board Info 2012 -

### Vice-President Carrie Sleep Continued from page 1

Each month we will highlight one of the BPWNA leaders. This month we take a glimpse into the life of **Carrie Sleep - Vice-President-** *I moved to Benton Park West from Fox Park. I have lived here for 7 years. I have 2 brothers and 1 sister who also live in St. Louis. My parents live in southern Missouri and hope to move here by this summer. I currently have 3 jobs. My primary job is as a subject matter expert for an educational software company and am over our special education software. I am a part-time real estate agent for Coldwell Banker Gundaker. I also work part-time at Wal-*

*greens. I am single and enjoy as much time as possible with my little nephew and my ex's daughter (Raizha). I enjoy good food, cooking, spending time with family and friends. I love the city and enjoy working with kids.*

Watch for next months installment when Suzy Hennigh, Treasurer shares about herself.

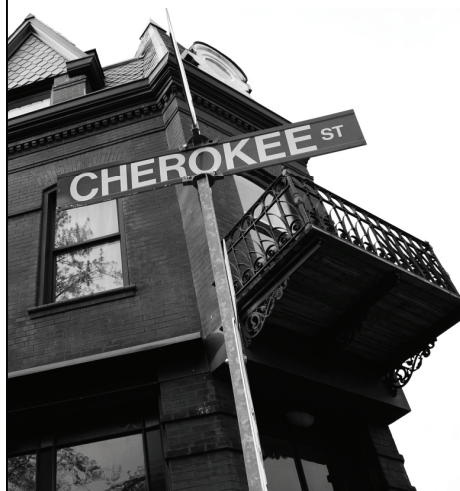
For more information about being a part of making BPW great, contact Linda Hennigh at 771-2161 or the neighborhood office at 771-0803.

**Be part of your neighborhood and join the FUN!**



## CHEROKEE STATION

www.cherokeestation.com



The Cherokee Station Business Association includes over 50 independently owned and operated businesses over seven blocks on Cherokee Street. Surrounded by a dense and active residential community, these businesses serve those within walking distance as well as attracting customers from all over the St. Louis area looking for a unique shopping experience.



# Weed & Seed

**Operation Weed & Seed** is a community based effort sponsored by the U.S. Department of Justice. BPWNA participates in the regular meetings with city and law enforcement officials at 2832 Arsenal, on the 2nd Thursday of every month - 6:30p.

Emergency help: 9-1-1

Non-emergency:  
314.231.1212

**"PEOPLE AREN'T  
SUSPICIOUS,  
BEHAVIOR IS!"**



**Barb Potts**- 613-3083(w)  
397-1091 (c)  
pottsb@stlouiscity.com

**Dena Hibbard**- 613-3109 (w)  
hibbardd@stlouiscity.com

**Judy Lane**- 613-7143 (w)  
lanej@stlouiscity.com

**Citizen Service Bureau**  
622-4800

**Refuse Department**  
353-8877

**Alley Lights (AmUE)**  
342-1000

**Street Lights (CSB)**  
622-4800

## Non-Emergencies – 911 Vs. 231-1212

**T**he Holidays may be over, but that doesn't mean we should stop watching out for each other!

### When Should I Call 911?

Call 911 when you see a crime in progress. This includes all acts of violence. When there is an immediate threat of injury or harm to a person. Call 911 in any medical emergency. Call when you've located or identified a suspect/subject who the police have been seeking. Call in situations where there is a need for crowd or traffic control. Or when you hear gunshots or someone screaming for help.

### When Should I Make A Non-Emergency Call? 314-231-1212

Call in incidents involving minor injuries that require no medical attention. Peace disturbance calls. Loud music and dogs barking are two examples. Illegal trash dumping. Reporting a stolen car or other stolen property. Whenever there is no immediate threat of injury or harm.

The same operators that answer emergency calls also answer non-emergency calls. The operator may determine that the situation is an emergency and transfer you to the 9-1-1 terminal if needed.

If you are ever unsure whether your call is

an emergency or a non-emergency please call 911.

### Suspicious Activity:

Loitering around closed business

Person riding a bike and holding another

Person selling items at low prices

Human traffic to and from a certain residence-drug house

Person pushing a lawnmower down a paved street, especially at night

Person running out of a store toward a running vehicle

Person stops a car, leaves the engine running and runs from the vehicle out of sight-stolen auto

Person repeated his or her behavior-look out, etc

Car driving at night without headlights

Vehicle parked occupied at a park

Abandoned vehicle after several days (231-1212)

Objects thrown from vehicle especially as police follow

Person carrying trash bag, pillow case that leave protruding marks

Join us again for the meetings on Jan 12, 2012

**Weed & Seed meeting at 6:30p.**

**3rd District Outreach meeting at 7p**

**2832 Arsenal (Five Star Senior Center.**

- **Happy Hour Fridays**
- **Dog Friendly Patio**
- **Sponsor - BPWNA Dog Park**



2321 Arsenal St.  
St. Louis, Mo 63118  
776-5889  
www.luvyduvys.com

**Serving all your catering needs**  
In Historic Benton Park and Benton Park West

*Nader and Sons, Inc.*

**Repairs American and Foreign Cars  
and Body Shop**

**Maroun**

**Eddie**

**Monir**

**2863 S. Jefferson**

**Phone: 771-9141**

**St. Louis MO. 63118**

**Phone: 773-1776**

# What's happening in Benton Park West

## JANUARY 2012

### January

**3** - BPWNA Board Meeting - 6:30p

**5** - Newsletter Deadline  
bpwnapub@yahoo.com

**8** - PUT OUT YOUR BULK TRASH. Must be out by 10p Sun.

**12** - W&S Advisory (6:30) Five Star 3rd District meeting

**19** - BPWNA Membership Meeting, 2832 Arsenal, Five Star Center, 7p. 2832 Arsenal

| Sun                         | Mon       | Tue                                | Wed       | Thu                                  | Fri       | Sat       |
|-----------------------------|-----------|------------------------------------|-----------|--------------------------------------|-----------|-----------|
| <i>1</i>                    | <i>2</i>  | <i>3</i><br>BPWNA Board mtg 6:30p, | <i>4</i>  | <i>5</i><br>Newsletter Deadline      | <i>6</i>  | <i>7</i>  |
| <i>8</i><br>Bulk Trash week | <i>9</i>  | <i>10</i>                          | <i>11</i> | <i>12</i><br>W&S 6:30p, Five Star    | <i>13</i> | <i>14</i> |
| <i>15</i>                   | <i>16</i> | <i>17</i>                          | <i>18</i> | <i>19</i><br>BPWNA mtg 7p, Five Star | <i>20</i> | <i>21</i> |
| <i>22</i>                   | <i>23</i> | <i>24</i>                          | <i>25</i> | <i>26</i>                            | <i>27</i> | <i>28</i> |
| <i>29</i>                   | <i>30</i> | <i>31</i>                          |           |                                      |           |           |

## February Events

**Feb 7:** Board Mtg, 6:30p, Five Star Senior Center, 2832 Arsenal

**Feb 8:** Weed & Seed, 6:30p, Five Star, Holiday Gathering

**Feb 16:** BPWNA Neighborhood Meeting, 7p, 2832 Arsenal - Five Star

**Feb 18:** Mardi Gras Booth in Soulard! Volunteer NOW!

### Be involved in 2011

Be part of Benton Park West

Contact Linda Hennigh at 314.771-2161, neighborhood office at 314-771-0803 or any Board member.

### Lafayette Park United Methodist Church

2300 Lafayette Avenue  
Saint Louis, MO 63118  
314-771-9214 www.lp-umc.org

#### Worship

- 9:30a - Service; Fellowship 10:30
- Children's services and childcare provided.

**Vision** – "Lafayette Park United Methodist Church will be a church without walls, creating a visible sign of Christ's presence in our urban community and beyond"



**ssdn**

### ENROLLING NOW

Full day child care and preschool  
Accredited early childhood center  
Nurturing, experienced teaching staff  
Breakfast, lunch and snack provided on-site  
A welcoming environment for all families

**Call 865-0322, x0 for information or to schedule a visit.**  
**Hablamos Espanol**

SSDN  
2930 Iowa Avenue • St. Louis, MO 63118  
(314) 865-0322 • www.ssdn.org



# Library Calendar

## January 2012

**Library Corner - Erin Guss**

## Happy New Year from the SLPL

**\*Monday, Jan 9 11-11:30a**  
Storytime: Toddler/  
Preschool.

**\*Wednesday, Jan 11 4:20-5:30p** Snowflakes - Create a beautiful snowflake. Grd 3-5..

**\*Tuesday, Jan 17 4-5p**  
Asian New Year-Original Rabbit. Celebrate the New Year and make an origami rabbit. Grd K-6.

**Thursday, Jan 19 4-5p**  
DIY: Accessorize. Add some bling to a ring or design a wallet. Grd 6-12.

**Thursday, Jan 26 4-6p**  
Movie: Cars 2. Families.

\*For groups larger than 5, please register in advance.

### ADULTS

**Saturday, Jan 19 5-6:30p**  
A Tea Party: The history and the health benefits of tea. Join Dr. Sheow-Hwey Chang, Artist, Educator and founding president of the Friends of Taiwan-Greater St. Louis Chapter as she hosts a Tea Party and gives a powerpoint presentation. Tea-tasting party will follow. Adults.

2012 is a milestone for the St. Louis Public Library. January celebrates the 100th anniversary of the original opening of Central Library.

Watch for more info, later this year, for this remarkable centennial celebration slated to be the party of the century.

The challenge of the Library system is to bring the treasures of our past into our present, breathing new life into a downtown that serves as the beating heart of the region.

Your Library is working hard to ensure that the New Year is a

success for the entire community by providing job application assistance, homework help for students, curriculum aid for teachers, business support, as well as providing books, movies, music and more to busy patrons. We promise the coming year will bring many new services and possibilities to the enormous variety already available. Welcome to 2012!

\*Words are taken from Waller F. McGuire's, Executive Director, column in the January issue of Check It Out!

Barr - 1701 South Jefferson Avenue (314) 771-7040

Carpenter - 3309 South Grand Blvd. (314) 772-6586

9am - 6pm Monday  
12n - 7pm Tuesday-Thursday  
11am - 6pm Friday  
9am - 6pm Saturday

9am - 9pm Monday-Thursday  
9am - 6pm Friday and Saturday  
1 - 5pm Sunday

Ask a Librarian - Have a question you can't find the answer for? Ask either at your local library, online or over the phone.



[www.RueLafayette.us](http://www.RueLafayette.us)  
2026 Lafayette Ave  
314.772.CAFE

**LIVE MUSIC**  
for weekend  
**BRUNCH**

  
**OPEN**  
Tues-Sun

  
**Breakfast**  
**Lunch**

\*FREE house coffee  
w/purchase for our  
neighbors w/this ad!

## FRENCH CAFE & BOUTIQUE



**RIGHT IN THE NEIGHBORHOOD!**

Delicious food . Full Espresso Bar . Wine . Beer  
Pastries . Authentic French Croissants



**Contact Numbers****Crime Prevention and Quality of Life**

Emergency/Drug Activity 911  
 Non-Emergency 231-1212  
 Drug/Gang Hotline 241-COPS  
 Joe Calabro - 3rd Dist PA Officer 444-0169  
 Dave Krapf - 3rd Dist Prob Prop 444-0185  
 Citizen Ser Bureau 622-4800

**Alderman:**

Ken Ortmann 622-3287 (w)  
 776-0161 (h)

**Neighborhood Stabilization Officers:**

Barb Potts, 314-657-1370 (w)  
 314-397-1091 (c)  
 pottsb@stlouiscity.com

Dena Hibbard, 314-657-1359 (w)  
 hibbardd@stlouiscity.com

**MISC:**

Pothole Department 768-2805  
 Refuse/Recycle Department 353-8877  
 Five Star Center 664-1008  
 Illegal Dumping 911  
 Then call CSB 622-4800

**Lights:**

Alley Lights (AmUE) 342-1000  
 Street Lights (CSB) 622-4800

**Water:**

Open Hydrant 771-4880

**Additional Numbers**

Animal Abuse Hotline 647-4400  
 Child Abuse Hotline 800-392-3738  
 EnergyCare 773-5900  
 Five Star Senior Center 664-1008  
 Operation Brightside 772-4646  
 Parents Anonymous 647-HELP or 866-492-0843  
 Parental Stress b800-367-3543  
 Free 2-1-1 Service 800-427-4626  
 or (314) 421-4636

**2011 Membership Application  
Benton Park West - 2011**

Name: \_\_\_\_\_  
 Address: \_\_\_\_\_  
 Phone: \_\_\_\_\_  
 E-mail: \_\_\_\_\_

**Mail to: BPWNA Membership**

**PO Box 18671  
 Saint Louis MO 63118**

**Level of Membership:**

\_\_\_ General - \$ 10 per person  
 \_\_\_ Senior - \$ 6 per person  
 \_\_\_ Supporter - \$ 25 per person  
 \_\_\_ Patron - \$ 50 per person  
 \_\_\_ Sponsor - \$ 100 per person  
 \_\_\_ General Membership (Scholarship)  
 \_\_\_ Friend (non-BPW) - \$ 20 per person

**I would like to be involved with:**

\_\_\_ Beautification \_\_\_ Dog Park \_\_\_ Youth \_\_\_ Garden  
 \_\_\_ Facilities \_\_\_ Publications \_\_\_ Safety/Quality of Life  
 \_\_\_ Board \_\_\_ PR/Marketing \_\_\_ Block Link \_\_\_ Membership

**Recycle Dumpsters in 2012**

As many of you may have noticed, there are recycle dumpsters in most of the alleys in Benton Park West. It has been noted to Alderman Ken Ortmann that many of the alleys east of California still do not have the recycle dumpsters.

*The Porch Review* will be providing basic education on using the new dumpsters.

As indicated below, many items we normally just toss in the trash can be recycled.

There are fewer items that can't be recycled than can. Basically, plastic bags and a few specific items and food contaminated items are the only things that can't be recycled. Watch for more info in future issues of *The Porch Review*.

**Single-Stream Recycling**

Rinse containers. Discard caps and lids. Labels do not need to be removed. Do not include food contaminated materials. If in doubt, leave it out.

**No Plastic Bags**

|                                |   |                               |
|--------------------------------|---|-------------------------------|
| <b>Cans</b><br>                | <b>Foil, Pie Plates &amp; Trays</b><br> | <b>PLASTIC</b><br>            |
| <b>Boxes &amp; Pouches</b><br> | <b>Cartons</b><br>                      | <b>Bottles &amp; Jars</b><br> |
| <b>Cardboard</b><br>           | <b>PAPER</b><br>                        | <b>Steel</b><br>              |

**CITY OF ST. LOUIS REFUSE DIVISION**

WEB <http://stlouis-mo.gov/government/departments/street/refuse/recycle/alley-curb-dump-cart-recycle.cfm>  
 E-mail: [recycle@stlouiscity.com](mailto:recycle@stlouiscity.com)

**Benton Park West**

Neighborhood Association  
 P.O. 18671  
 Saint Louis, MO 63118



On the Web  
[www.bentonparkwest.org](http://www.bentonparkwest.org)