

**Neighborhood
Meetings, 7p
July 21
Aug 18**

The Porch Review

DIVERSE BACKGROUNDS, UNIQUE PATHS, ONE WIN - PEOPLE OF BPW



Movie in Benton Park - July 23rd

JOIN THE FUN! Popcorn - Sno Cones - Cotton Candy - 25 cents each Another fun event in the Park



Events

July 21: Neighborhood Mtg.
7p, Five Star, 2832 Arsenal

July 23: Movie in Benton Park
MegaMind - 8:30p.

Aug 2: National Night Out

Aug 6: Back To School - Salvation Army 10a-1p. Food 11-Noon

Aug 6: Back To School Concert in Benton Park, 5-9p

Aug 9: BPWNA Board Mtg
6:30p, Five Star Senior Center

Aug 11: Weed & Seed (6:30) Five Star, 3rd District - summer break

Aug 18: Neighborhood Mtg.
7p, Five Star, 2832 Arsenal

Aug 27: BPWNA Yard Sale 7a-1p,
Five Star, 2832 Arsenal

Movie starts at 8:30p. Food available at 8p.

COME EARLY - find a spot for your blanket or lawn chair

— Back to School and August Yard Sale —

LOTS of things are happening in BPW for August.

The **Back to School** event, hosted by The Salvation Army & Benton Park West, is **August 6th, 11a-1p.** School kids of all ages & sizes are invited. See page 9.

August 27th brings the annual **BPWNA Yard Sale** at Five Star Senior Center - **7a-1p.** The Famous "Noon-1p 50% off" is once again returning. See page 5.

Inside this issue:

Gardens	2	Cooling Centers	5	Candle Fundraiser	8
9th Ward Map	3	Movie and a Bite	6	Back to School Info	9
Benton Park Concert	4	Quality of Life	7	Food for Fines!	11
Yard Sale Info	5	School's Out Café	8	Mark It! Pen	12

The Presidents Corner...



Linda Hennigh

Summer 2011 is certainly in full swing and what an unusual summer it has turned out to be. I hope you have all been able to deal with all the water from rains which have been more like Spring AND the high temperatures which have been more like August! Besides the animals of our neighborhood that needs extra care, I would like to ask you to help our with our gardens which serve as an oasis of green mid the brick and cement of our lovely, historical city.

We have three neighborhood gardens, one for vegetables at Ohio and Crittendon, one for dogs at Nebraska and Utah and one for flowers, The Neighborhood Garden at California and Wyoming. The last is the original and has been around for many years due to the attention of a wonderful garden leader in that block. Like many, the original group of caretakers has dwindled, some have moved, some have realized that flowers take even more work than vegetables

Welcome to 2011 Garden

and fallen by the wayside. The leader has no group to help and has a huge number of additional responsibilities that cropped up over the last few years.

I would like to extend an invitation to all, as you pass by The Neighborhood Garden, please help out and pull a few weeds. The surrounding fence is for decoration and never locked. Pulling weeds can be medicinal as you commune with nature AND provides some exercise. You say "I don't know a weed from a flower?" If it's growing out of a bush, is higher than any surrounding plant, vining over the top of a fence or plant, IT IS A WEED! Weeds grow faster than happy plants and have less roots so are easy to pull. Please, take a few minutes each week when walking or driving by to pull weeds out of the area outside the fence and help make that corner shine!

Thanks and happy summer!

Linda Hennigh, President

2011 Board

Linda Hennigh - President
771-2161(h) linda_hennigh@yahoo.com

Martha Buckley - Vice-President
566-9348(c) marthabuckley@gmail.com

Diane Hurwitz - Treasurer
776-7877(c) dmh819@yahoo.com

Shannon Headley - Secretary
495-5404(c) srdogfostering@aol.com

Carrie Sleep - Member at Large
cesleep@yahoo.com

Shirley Johnson - Member at Large
muchhumility@yahoo.com

Block Link
bpwnapub@yahoo.com

Bruce Levine - Dog Park
(314) 479-4256 sbl_63118@msn.com

Bill Byrd - Facilities
bpwnabill@yahoo.com

Martha Buckley - Membership
bpwnamembership@yahoo.com

Bill Byrd - Publicity
bpwnapub@yahoo.com

Pam Welsh - Youth
pwelsh@epssg.com



BPWNA is a 501(c)3 organization registered with US IRS and Missouri Secretary of State.



BPW Dog Park You just need the following:

1. Submit application.
2. Your pet must have been neutered or spayed
3. Your pet has all immunizations; rabies, distemper, and bordetella.

Find the application online at www.bentonparkwest.org and send to:
BPWNA, PO Box 18671, St. Louis, MO 63118

Don't let your pooch miss out on the freedom of the park!

*BPWNA Dog Park is also available to Tower Grove East, Fox Park, McKinley Heights, Benton Park, Marine Villa and Gravois Park residents.

See Page 8 this month for more info about the Dog Park!

**THANK YOU
FOR
SUPPORTING
LOCALLY
OWNED
BUSINESSES!**

Keep more of what you earn with tax-free bonds.

Mary E Cox, AAMS®
Financial Advisor

1908 Park Ave
St Louis, MO 63104
314-577-0167

www.edwardjones.com

Edward Jones®
MAKING SENSE OF INVESTING

A Publication of
The Benton Park West
Neighborhood Association

Design/Editor: Bill Byrd

Proofreaders: Kenneth Pruitt, Linda Hennigh

Contributing Writers: Linda Hennigh, RJ Johnson, Bill Byrd, Erin Guss, Kenneth Ortmann,

Contributing Photographer: Bill Byrd

**Benton Park West
Neighborhood Association**

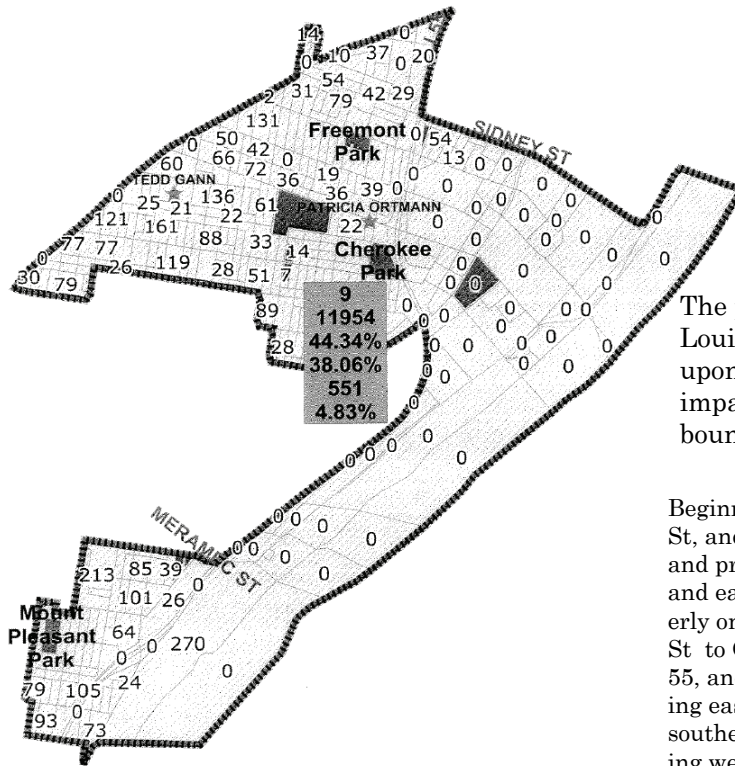
P.O. Box 18671
St. Louis, MO 63118
Phone: 314-771-0803

E-mail: BPWNA@yahoo.com
On the Web at: www.bentonparkwest.org

Advertising Information:
bpwnapub@yahoo.com or 314.771.0803.

Advertising and Editorial deadline:
The 5th of each month.

Proposed 9th Ward Map



Jeanette Mott Oxford,
59th District

314-771-8882 (home)
573-751-4567 (office)
jeanette.oxford@house.mo.gov

Enjoy your Summer!

Ward 9 - Proposed Boundaries

Provided by Alderman Ken Ortmann

The population of Saint Louis has changed, based upon the 2010 census. This impacts the is the ward boundaries. Ward 9 now has a population of 11, 954. After consideration by the Aldermanic Board, the proposed boundaries for the next 10 years are:

Beginning at the point of intersection of Gravois Ave and Potomac St, and proceeding easterly along Gravois Ave to S Jefferson Ave, and proceeding northerly along S Jefferson Ave to Shenandoah Ave, and easterly on Shenandoah to Indiana Ave, and proceeding southerly on Indiana Ave to Victor St, and proceeding easterly on Victor St to Gravois Ave, and proceeding easterly along Gravois Ave to I-55, and proceeding southerly along I-55 to Sidney St, and proceeding easterly along Sidney St to the Mississippi River and proceeding southerly along the Mississippi River to River Bluff Pl, and proceeding westerly along River Bluff Pl to S Broadway, and proceeding southerly along S Broadway to Nebraska Ave, and proceeding northerly along Nebraska Ave to Delor St, and proceeding westerly along Delor St to a north/south alleyway between S Compton and Michigan and proceeding northerly along such alleyway to Itaska St, and proceeding westerly along Itaska St to S Compton, and proceeding northerly along S Compton Ave to Osceola St, and proceeding easterly along Osceola St to Michigan Ave, and proceeding southerly along Michigan Ave to an east/west alleyway, and proceeding easterly along such alleyway to Minnesota Ave, and proceeding northerly along Minnesota Ave to Meramec St, and proceeding easterly along Meramec St to I-55, and proceeding easterly along I-55 to S Broadway, and proceeding westerly along S Broadway to Miami St, and proceeding westerly along Miami St to Indiana Ave, and proceeding northerly along Indiana Ave to Potomac St, and proceeding westerly along Potomac St to S Jefferson Ave, and proceeding northerly along S Jefferson Ave to Cherokee St, and proceeding westerly along Cherokee St to S Compton Ave, and proceeding southerly along S Compton Ave to Potomac St, and proceeding westerly along Potomac St to the point of beginning.



Jefferson Avenue Bistro

3701 S. Jefferson Avenue
Saint Louis MO 63118
314 - 664 - 1720


**Great food
Great fun
Great people**

6a - 1:30a Mon-Fri
8a - 1:30a Sat
9a - 12:30p Sun

\$2 breakfast specials
\$4.95 lunch specials
No entree over \$9.95

Check out our beautiful banquet room
for private parties!

Find us on the web at jeffersonbistro.com

Check-us out on Facebook 



314-865-1211

AUTO BARGAIN CENTER USED CARS AND TRUCKS

BOB QUINN
Owner

2700 Gravois
St. Louis MO 63118

Benton Park Concert Series: Back to School Concert

Benton Park, corner of Jefferson & Arsenal (across I-55 from Anheuser-Busch), St. Louis, MO 63118

Saturday, Aug. 6 5 - 9p

Get ready to send the kids back to school with the Benton Park Concert Series' Back to School Concert event.

Make sure to stop by and participate in the mobile health screening from Grace Hill and school supply giveaways for the needy.

Musical acts will include the Benjamin Riley Band from 5 p.m. to 7 p.m. and the Murder City Players from 7 p.m. to 9 p.m.



Wishing everyone
a Safe Summer.
See you all in
September

Mary Cox, Financial Advisor
for Edward Jones 314-577-0167

WEDDINGS - SENIORS - FAMILIES

LOVE & LIFE
photography

3015 Salena Street, St. Louis, MO, 63118
314-440-8540 | www.loveandlifephotography.com



Kakao Chocolate
2301 S. Jefferson Avenue
St. Louis, MO 63104
314-771-2310

Artisan Chocolates • Locally Roasted Coffee
Lattes and Cappuccinos with House-Made Syrups

Open Tuesday - Friday, 7 a.m. to 6 p.m.
Saturday 9 a.m. to 4 p.m.



Music House

Karaoke - Fri. & Sat. Nights
Keno All MO. Lotto Tickets
Packaged Liquor

314-776-0996 or onenitestand-

2800 Ohio Ave at Gravois
St. Louis, MO 63118

ROGER & KATHERINE
PROPRIETORS

Hours:

12:00 Noon to 1:30am
Mon - Sat.

Summer Art Camp 2011

Fashion Design Camp 2011

Rock 'n Runway

Session (1) Jul 18-22 - 50's, 60's, & 70's Cost \$175.00

Session (2) Jul 25-29 - 80's, 90's & Now! Cost \$175.00

Children's Fashion Show - 2p, FREE

Benefit Fashion Show & Cocktail Party - 7-10p

September 10th @ Killeen Studio Architects

Canvas, Cocktails 'n More

Thursday 7/7: & Friday 7/8: Happy Hour Creative

Friday 7/22: Ruffle Scarf

Friday 7/29: Block Printed Scarf

Thursday 8/4 & Friday 8/5: Famous Bridges

Thursday 8/11 & Friday 8/12: Reverse Fabric Printing

Thursday 8/18 & Friday 8/19: Larger than Life

Thursday 8/25 & Friday 8/26: Tuscan Landscape

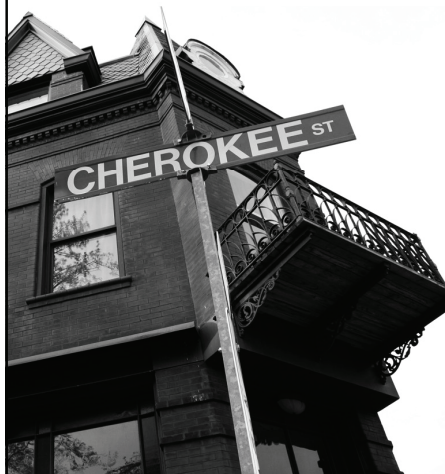
For more information contact: 314-773-3633

<http://www.southbroadwayartproject.org>



CHEROKEE STATION

www.cherokeestation.com



The Cherokee Station Business Association includes over 50 independently owned and operated businesses over seven blocks on Cherokee Street. Surrounded by a dense and active residential community, these businesses serve those within walking distance as well as attracting customers from all over the St. Louis area looking for a unique shopping experience.

Cooling Centers in the BPW Area

Have a neighbor who doesn't have AC? Cooling centers are available in our area. For more info contact Cool Down St Louis (314-241-7668) or United Way (800-427-4626).

Please check on neighbors in this extreme heat.

Cooling Centers:

*Salvation Army, The - Temple Corps 2740 Arsenal Street 771-3460 8:00a - 4p M-F.

*Five Star Senior Center 2832 Arsenal 664-1008 8a-3p M-F.

*Carpenter Library 3309 S Grand Blvd. 772-6586, 9a-9p M-Thur; 9a-6p Fri & Sat; 1p-5p Sun



Your Neighborhood Grocer
2901 Salena St St. Louis, MO 63118
314-776-2331

** Cold Cuts * Deli * Dairy products
* Outdoor Seating & Package Liquor
Daily Special's made from scratch!*

Mon-Sat 11:00am-7:00pm

7th annual Yard Sale

Benton Park West

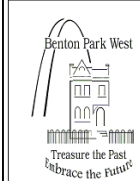
Annual Yard Sale

August 27th, 2832 Arsenal

Five Star Senior Center

MARK YOUR CALENDAR

go "Shopping" at the Annual Yard Sale 7a - 1p



- Have stuff you no longer need or want?
TIME TO CLEAN OUT!

- Bring your items to Five Star Senior Center on August 28th, 6-9p.

- Noon - 1p - 50% off on most items. Come and fill up a bag!

- Items include school/office supplies, household items, home repair, adult clothes, baby clothes, and miscellaneous.

All proceeds benefit the Benton Park West Neighborhood Association to make Benton Park West a GREAT place to live!



TEACHING the WORLD

in South St. Louis

At St. Frances Cabrini Academy, education is more than just reading, writing, and arithmetic.

It is a curriculum tailored to meet the needs of each child.

It is a compassionate and dedicated faculty of certified professionals.

It is a partnership between students, parents, and teachers.

It is a truly diverse community that respects and learns from other cultures.

At St. Frances Cabrini Academy, education is about our children, our families and our community.

We hope you can join us.

(314) 776-0883

www.cabriniaacademy.com

At the corner of Arsenal & Oregon
(one block from Gravois)

**Now Enrolling
Kindergarten - 8th Grade
Call for a tour!**





Membership Needs YOU!

Call 771.0803 for more info.

See page 12 for an application

Business Members

Auto Bargain Center
Blue Brick Renovation & Construction
Cherokee Station Business Association
Clowder House Foundation
Dutchtown South Community Corporation
Edward Jones - Mary Cox
Franciscan Connection
Five Star Senior Center

Indigo Massage
Jefferson Avenue Bis-tro
Kakao Chocolate
Lafayette Park UMC
Love & Life Photography
Luvy Duvy's
Nader & Sons
Near Southside Employment Coalition
One Nite Stand
Park West Grill

Pointer's Market
ReMax - Connie Petty
Rich's Automotive and Truck Repair
SLPD 3D Partnership
SSDN
St. Frances Cabrini Academy
The Salvation Army

General

Pamela Atchley
Ivan Cason
Michelle Cason
Barry Gilbert
Virginia Gilbert
Shannon Headley
Amy Headrick
Suzanne Hennigh

Brian Kennen
Joe Kriegesmann
Amanda Oncken
Christian Oncken
Judith K. Rabin
Gwendolyn Robinson
Christina Sullivan
Michael Sullivan
Josh Welsh
Pamela Welsh
Sherry Young

Senior

Mercedes Dickerson-Helen Mitchell
Jerry Pierce

Supporter

John Aho
Chris Dumas

Michelle Foley
Scott McIntosh
Megan Schacht
Carrie Sleep
Aaron Weil

Patron

Bill Byrd
Linda Hennigh
Bruce Levine
Marlene Levine

Sponsor

Friends

Become a member TODAY!

Mail the application, on page 12, and your check: BPWNA, PO Box 18671, Saint Louis MO, 63118.

City, State and Federal officials, Friends of BPWNA

Jennifer Florida - Alderwoman, 15th Ward
Dena Hibbard - NSO*
Ken Ortman - Alderman, 9th Ward

Craig Schmid - Alderman, 20th Ward
Judy Lane - NSO*
Barb Potts - NSO*

*Neighborhood Stabilization Officer



Movie and a Bite

Shine and Galaxy Int'l Food

by RJ Johnson, The Porch Reviewer

Movie Flashback . . . Shine

Shine, which stars *Geoffrey Rush*, is based on the life of pianist and child prodigy David Helgott. It's a story about what could have been and reveals how the actions of one's parent(s) can have a devastating impact on the life of a child. As a youth David's domineering father, is the driving force behind the development of his musical talents. As David enters adolescence he emerges as a very skilled pianist. However the accolades David receives have a negative effect on his father, who plays a significant role in

sabotaging David's opportunities for formal musical training.

The story is very interesting. However there is a gap in the narrative which leaves the viewer questioning what happened to David during a large period of his adult life. When we see David as an adult, there is a drastic change in his mental status. Although as a youth, David displayed hints of mental challenges, as an adult his mental illness is much more pronounced. There is no real diagnosis or explanation provided - one can only guess. Fortunately

the story comes full circle and David ultimately returns to the stage as an accomplished pianist. This is a movie to add to your DVD queue.

And a Bite. . . Galaxy Int'l Food, 1730 Olive, Downtown St. Louis

The beautiful thing about living in *Benton Park West* is that you have easy access to wide array of dining choices.

Galaxy Int'l Food (Hoagie City Diner) is a nice *mom and pop* diner in downtown St. Louis (about a five minute drive from BPW) where

you can get a good breakfast before heading into work or getting your weekend started. The French toast is excellent and Galaxy serves *turkey* sausage, which is a great perk for those *non-pork* eaters.

Galaxy also offers hoagies, fried rice and a small selection of Korean dishes (if you are in the mood for a little spice). The food is prepared right in front of you and the cook wears gloves (always a plus!). The service is great and the prices are *pocket friendly*. If you are in the downtown area stop by and support local business.

Weed & Seed

Operation Weed & Seed is a community based effort sponsored by the U.S. Department of Justice. BPWNA participates in the regular meetings with city and law enforcement officials at 2832 Arsenal, on the 2nd Thursday of every month - 6:30p.

Emergency help: 9-1-1

Non-emergency:
314.231.1212

**"PEOPLE AREN'T
SUSPICIOUS,
BEHAVIOR IS!"**



Barb Potts- 613-3083(w)
397-1091 (c)

pottsb@stlouiscity.com

Dena Hibbard- 613-3109 (w)
hibbardd@stlouiscity.com

Judy Lane- 613-7143 (w)
lanej@stlouiscity.com

Citizen Service Bureau
622-4800

Refuse Department
353-8877

Alley Lights (AmUE)
342-1000

Street Lights (CSB)
622-4800

You can help improve the Quality of Life for Everyone

by RJ Johnson

Benton Park West (BPW) is a wonderful neighborhood with a lot of character, a true St. Louis jewel which we should preserve, maintain and continuously enhance. The goal of the BPW Beautification Committee (BPWBC) this year is to assist the BPW Association in its efforts toward improving the quality of life for all its residents.

If you see anything illegal contact the police authorities at 911!!

If you believe the activity is not an emergency, contact the

Non-Emergency Police Department number, 231-1212.

****REMEMBER****

you do not have to live on the block to express your concern.
If it is an issue on any BPW block, please report it!

If you see issues around the neighborhood that you believe are in violation of the STL City

Code/Ordinance contact the Citizens Bureau, 622-4800. **You can remain anonymous.** If you see problems in the neighborhood but feel uncomfortable making a complaint, feel free to send an email to the BPWBC bpwbeautification@yahoo.com and your complaint will be forwarded to the appropriate authority. You can remain anonymous.

Have a great day!

Courtesy of the BPW Beautification Committee

Starting in September,

don't miss the new

Law Enforcement Series

What your burglar or car thief won't tell you!

- Happy Hour Fridays
- Dog Friendly Patio
- Sponsor - BPWNA Dog Park



2321 Arsenal St.
St. Louis, Mo 63118
776-5889
www.luvyduvys.com

Serving all your catering needs
In Historic Benton Park and Benton Park West

Nader and Sons, Inc.

**Repairs American and Foreign Cars
and Body Shop**

Maroun

Eddie

Monir

2863 S. Jefferson

Phone: 771-9141

St. Louis MO. 63118

Phone: 773-1776



Community Information Corner

Five Star will host the 8th Annual Cool Down event on August 3rd, from 10a-12:30p. Thanks to AraMark Services, Walgreens, STLPD, Alderman Ken Ortmann, Neighborhood Stabilization Officers, Benton Park West and many more. Thanks to Mike Howard at Five Star Center for hosting this event.

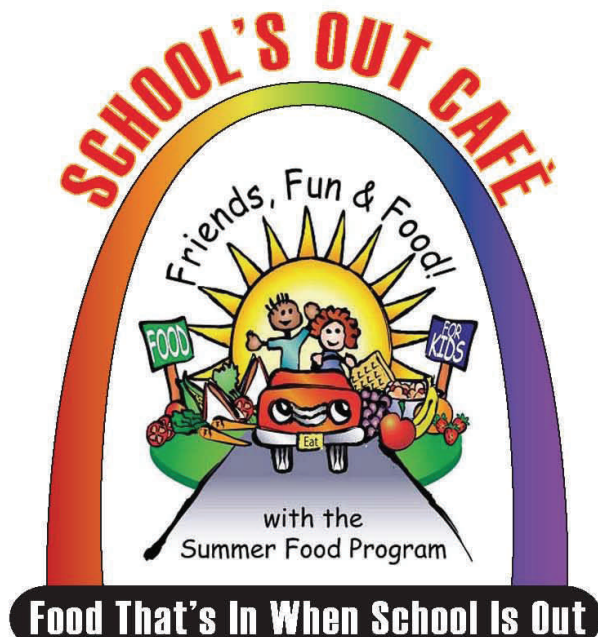
If you've not checked it out, go to www.igive.com and register to help support BPW. Just find Benton Park West Neighborhood Association in the list of organizations.

Then Simply by registering and buying online, you can be part of a fundraiser. No extra cost to you, just using the online stores pays the fundraiser.

FREE BREAKFAST & LUNCH

For Young People Up to Age 18

JUNE 8 - AUGUST 13



For information about
site locations...

Contact: Youth & Family Services
Office: (314) 657-1695

OFFICE FOR RENT

Pleasant, quiet, furnished office for rent at Epiphany United Church of Christ (2911 McNair). Free utilities, WiFi, and great light! \$250/mo for 250sq ft with occasional use of adjacent conference room; or \$400/mo for 500 sq ft which includes exclusive use of conference room. Call Rev. Mary Albert a 314-707-9091 or e-mail epiphanyucc.1@juno.com

Beautification Fundraiser is BACK! Aroma Gifts donating 10% of Sales!

BPW Beautification Committee has renewed its fundraising efforts with Aroma Gifts.

Aroma Gifts is donating 10% of all proceeds ordered online to the

BPW Association.

The funds raised will go towards the beautification (painting, lawn care, etc.) of a needy property in the neighborhood.

Support BPW and order NOW through the end of the summer:

<https://aromagifts.scentsy.us/Buy>

Five Star Senior Center

Ph.314-664-1008
Fax.314-865-2900
E-Mail fcoac@swbell.net



Meals-Transportation
Social Activities
Mon.-Fri. 9:00-3:00

2832 Arsenal St. Louis, MO 63118-2317

Michael W. Howard

Executive Director



Rich's Automotive and Truck Repair

Independently owned
& operated

Full Service Automotive & Truck Repair
All Major & minor automotive & truck repairs
ASE Certified Technicians – Proud Member AASP

Certified Clean Air Emission Repair Center
Missouri State Inspection Station
Gateway Clean Air & Emission Facility

Free Shuttle service
(within a reasonable distance)



Open Mon-Fri 8-5.
3700 Michigan at Winnebago
314 - 771 - 2500

Over 75 years of combined mechanical experience

**Over a decade of service
to South St. Louis!**

Food Pantries in 63118

Guardian Angel at
Hosea House So-
cial Services
2635 Gravois Ave.
St. Louis, MO
63118
314-773-9027

Joint Neighborhood
ministry, McNair
2911 McNair Ave.
St. Louis, MO
63118
314-771-3987

Metro Christian
Worship Center
Brothers Keepers
Benevolence
3452 Potomac St.
St. Louis, MO
63118
314-772-8444

The Salvation Army
Temple Corps Wor-
ship and Commu-
nity Center
2740 Arsenal St.
St. Louis, MO
63118



2011

Back-to-School/ BACKPACK PARTY



Saturday - August 6 10:00a - 1:00p

- Planned Free Haircuts from Great Clips
- **Backpacks with school supplies from The Salvation Army**
- Lunch provided by Benton Park West Neighborhood Association

To receive a backpack:

Parents need to bring proof that their child is enrolled in school, this can be last year's report card or this year's enrollment letter.

2740 Arsenal - The Salvation Army Temple Corps parking lot
For more information call 314-771-3460

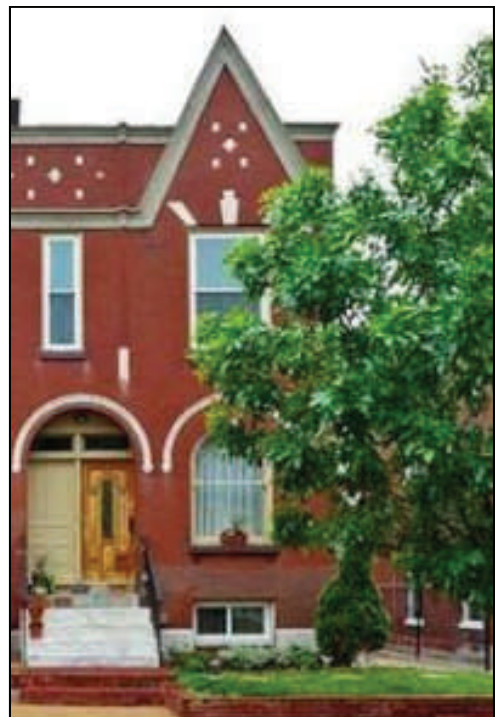
A partnership of The Salvation Army - Temple Corps and Benton Park West Neighborhood Association

BPW Real Estate

2813 Arsenal

AMAZING & BELOW MARKET VALUE FOR THIS SPECTACULAR BENTON PARK RENOVATION!

This home is move in ready and boasts over 1800 SF of living space and a 2 car garage! Enjoy the modern conveniences of this affordable 4 bd 3-1/2 bath home with 2 master bedroom suites! Open floor plan features main floor living room, dining room and fabulous kitchen with custom mocha cabinetry, countertops, travertine backsplash, oil rub bronze fixtures and granite breakfast bar. Versatile, main floor master suite could be home office, in-law quarters or den and features a private entrance. Second level features master bedroom suite with luxurious bath plus two additional bedrooms and a jack-n-jill bath. Additional amenities include main floor half bath, second floor laundry! Zoned heating and cooling, alarm system and fenced backyard! Partial tax abatement for approx. 2 more years makes offers very low taxes! This is a must see! Easy highway access and quick commute to downtown St. Louis.



For more info go to:

http://www.cbgundaker.com/propertydetail.jsp?mls_num=11016150&type=res

In an effort to showcase what Benton Park West has to offer, *The Porch Review* will highlight a property each edition.

BPWNA will once again host a
For Sale House Tour in September.
Watch for Details!



2101 Cherokee Street • St. Louis • MO • 63118

• visit themudhousestl.com or follow us on facebook! •

local coffee
housemade pastries
crepes
sammiches
soups
odd books
quick internet
cool records
good friends

314.776.6599
M-F 7-5:30
Sa-Su 8-6

July

21 - BPWNA

Monthly meeting - Five
Star Center, 7p,
2832 Arsenal

23 - Movie in Benton

Park 8:30p - **MegaMind**
Popcorn, Snocones, Cot-
ton Candy - 25 cents each

August

2 - National Night Out

5 - Newsletter Deadline
bpwnapub@yahoo.com

6 - Back to School with
The Salvation Army -
10a-1p

6 - Concert in the Park -
Back to School Event,
5-9p

9 - BPWNA Board
Meeting - 6:30p

11 - W&S Advisory
(6:30) Five Star
3rd District meetings,
see you in Sept

15 - PUT OUT YOUR
BULK TRASH. Must be
out by 10p Sun.

27 - BPWNA Annual
Yard Sale 2832 Arsenal,
Five Star Center, 7a-1p.

What's happening in Benton Park West

JULY-AUG 2011

Sun	Mon	Tue	Wed	Thu	Fri	Sat
17	18	19	20	21 BPWNA mtg 7p, Five Star	22	23 Movie in BP <i>MegaMind</i>
24	25	26	27	28	29	30
12	1	2 National Night Out	3	4	5 Newsletter Deadline	6 Back to School - Salvation Army Concert in BP
7	8	9 BPWNA Board mtg 6:30p,	10	11 W&S 6:30p, Five Star	12	13
Bulk Trash week 14	15	16	17	18 BPWNA Neighborhood Mtg. Five Star	19	20
21	22	23	24	25	26	27 Annual Yard Sale
28	29	30	31			

September Events

Sept 6: Board Mtg, 6:30p, Five Star Senior Center, 2832 Arsenal

Sept 8: Weed & Seed, 6:30p, Five Star, 3rd District Outreach, 7p

Sept 15: Neighborhood Mtg, - 7p, 2832 Arsenal, Five Star Senior Center

Be involved in 2011

Be part of
Benton Park West

Contact
Linda Hennigh at
314.771-2161,
neighborhood office
at 314-771-0803
or any
Board member.

Lafayette Park United Methodist Church

2300 Lafayette Avenue
Saint Louis, MO 63118
314-771-9214 www.lp-umc.org

Worship

- 9:30a - Family and Friends on Sept 18th
- Children's services and childcare provided.

Join for food fellowship at 10:45a each Sun

Vision - "Lafayette Park United Methodist Church will be a church without walls, creating a visible sign of Christ's presence in our urban community and beyond"



ssdn
ENROLLING NOW

Full day child care and preschool
Accredited early childhood center
Nurturing, experienced teaching staff
Breakfast, lunch and snack provided on-site
A welcoming environment for all families

**Call 865-0322, x0 for information
or to schedule a visit.
Hablamos Espanol**

SSDN

2930 Iowa Avenue • St. Louis, MO 63118
(314) 865-0322 • www.ssdn.org



White Bean and Roasted Chicken Salad

Great for picnics or lazy-day suppers

Prep time: 15 min **Makes:** 5 servings
Cook Time: 0 min **Start to Finish:** 15 min

Ingredients:

Salad:

- 2 cups coarsely chopped skinless, boneless rotisserie chicken
- 1 cup chopped tomato
- 1/2 cup thinly sliced red onion
- 1/3 cup sliced fresh basil
- 2 (16-ounce) cans cannellini beans or other white beans, rinsed and drained

Dressing:

- 1/4 cup red wine vinegar
- 2 tablespoons extravirgin olive oil
- 1 tablespoon fresh lemon juice
- 2 teaspoons Dijon mustard
- 1/2 teaspoon salt
- 1/4 teaspoon freshly ground black pepper
- 2 garlic cloves, minced

Prep:

- To prepare salad, place first 5 ingredients in a large bowl; stir gently to combine.
- To prepare dressing, combine vinegar and remaining ingredients, stirring with a whisk. Drizzle over salad, tossing gently to coat.

Nutrition Information: Per Serving: Calories 369, Total Fat 10.1g, Chol 45mg, Sodium 342 mg, Carbs 41.5g, Fiber 9.6g, Protein 29.2g.

Library Corner - Erin Guss

Food for fines Is Back!

St. Louis Public Library is partnering with the St. Louis Area Foodbank once again to bring you Food for Fines.

Throughout the month of July, when you bring in one canned good you will receive \$1 off your overdue fines, up to \$25.00.

Items the library can accept include:

- Canned Meat
- Peanut Butter

- Canned Fruit
- Baby Formula
- Canned Chili
- Hot and Cold Cereal
- Rice & Beans
- Powdered Milk
- Macaroni and Cheese
- Canned Vegetables

Even if you don't have fines, the library can gladly accept your donations for the Foodbank.

Library Calendar Jul-Aug 2011

July

Tuesday, July 19 6-8p.
Family Fun Night at The Magic House for Summer Reading Club members. Board bus - 5:45 p. Return to Library by 8:30p Free; Registration required. Families. Children must be accompanied by an adult.

***Monday, July 25, 10-11a.**
Globetrotting with Bobby Norfolk: Stories of Cultural Diversity. Families.

Tuesday, July 26, 4-6p
Movie: Nanny McPhee. Families

Wednesday, July 27, 4-6p.
Game Time: Play board & card games. Grades K-6

Thursday, July 28, 4-6p
Karaoke. Grade 6-12

ADULTS

Thursday, July 21 5:30-6:30p. Salsa Sharks Learn how to make different salsas. Registration required.

Aug

***Mondays, Aug 8, 22, 11-11:30a.** Stories, songs & more. Toddler/Preschool.

Wednesday, Aug 10, 4-6p.
Got Game? Play Nintendo Wiiä and Xbox 360ä. Grades 6-12.

Thursday, Aug 11, 4-6p.
Henna Body Art Temporary Tattoos. Grades 6-12.

Tuesday, Aug 16, 4-5p.

Glee Party: Get Your Gleeek On! Grades 6-12.

Wednesday, Aug 24, 3-4p.
World Flags Grades 3-8.

***Thursday, Aug 25, 4-6p.**
Hand Puppets - Paint your hands and make them talk! Grades K-6.

Tuesday, Aug 30, 4-6p.

Family Movie: Karate Kid Families.

Wednesday, Aug 31, 4-6p.
Game Time. Play board & card games. Grades K-6.

**Make
YOUR
Neighborhood
better**
**Contact any
board
member
or call the
neighborhood
office at
314.771-0803**

*A focus on wellness.
A focus on you.*

More than a massage studio,
Indigo specializes in total wellness.
Licensed Massage Therapists
provide personalized service,
tailored to fit your needs.

- Therapeutic Massage
- On-site Chair Massage
- Hot Stone Massage
- Yoga Classes & more

indigo
massage & wellness therapy

314-276-9882 - indigomassagetherapy.com
3030 Jefferson Ave. in Benton Park - gift certificates available

Contact Numbers**Crime Prevention and Quality of Life**

Emergency/Drug Activity 911
 Non-Emergency 231-1212
 Drug/Gang Hotline 241-COPS
 Joe Calabro -
 3rd Dist PA Officer 444-0169
 Dave Krapf -
 3rd Dist Prob Prop 444-0185
 Citizen Ser Bureau 622-4800

Alderpersons:

Ken Ortmann 622-3287 (w)
 776-0161 (h)
 Craig Schmid 589-6816 (w)
 Jennifer Florida 776-2890(w)

Neighborhood Stabilization Officers:

Barb Potts, 314-657-1370 (w)
 314-397-1091 (c)
 pottsb@stlouiscity.com

Dena Hibbard, 314-657-1359 (w)
 hibbardd@stlouiscity.com

Judy Lane 314-657-1365 (w)
 lanej@stlouiscity.com

MISC:

Pothole Department 768-2805
 Refuse Department 353-8877
 Five Star Center 664-1008
 Illegal Dumping 911
 Then call CSB 622-4800

Lights:

Alley Lights (AmUE) 342-1000
 Street Lights (CSB) 622-4800

Water:

Open Hydrant 771-4880

Additional Numbers

Animal Abuse Hotline 647-4400
 Child Abuse Hotline 800-392-3738
 EnergyCare 773-5900
 Five Star Senior Center 664-1008
 Operation Brightside 772-4646
 Parents Anonymous
 647-HELP or 866-492-0843
 Parental Stress 800-367-3543

**2011 Membership Application
Benton Park West - 2011**

Name: _____

Address: _____

Phone: _____

E-mail: _____

Mail to: BPWNA Membership

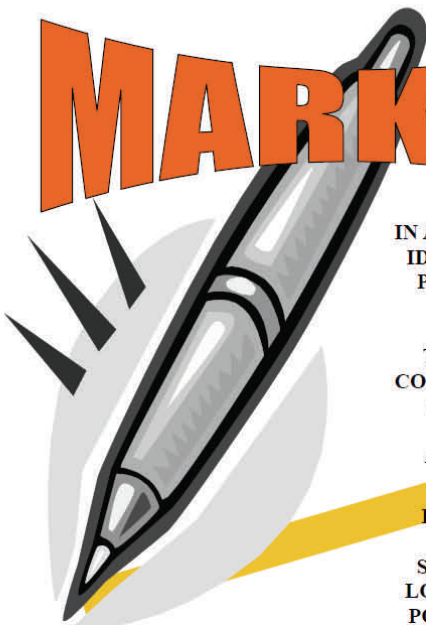
**PO Box 18671
 Saint Louis MO 63118**

Level of Membership:

___ General - \$ 10 per person
 ___ Senior - \$ 6 per person
 ___ Supporter - \$ 25 per person
 ___ Patron - \$ 50 per person
 ___ Sponsor - \$ 100 per person
 ___ Friend - \$ 20 per person
 ___ General Membership -
 Scholarship

I would like to be involved with:

___ Beautification ___ Dog Park ___ Youth ___ Garden
 ___ Facilities ___ Publications ___ Quality of Life/Safety
 ___ Board ___ PR/Marketing ___ Block Link ___ Membership

MARK IT!

IN AN EFFORT TO TRY TO
 IDENTIFY RECOVERED
 PROPERTY TAKEN IN
 BURGLARIES

THE THIRD DISTRICT
 COMMUNITY OUTREACH
 OFFICE HAS MADE

AVAILABLE TO YOU
FREE
 INVISIBLE INK PENS

SUPPLIED BY THE ST.
 LOUIS METROPOLITAN
 POLICE DEPARTMENT

SIMPLY MARK EACH
 ITEM WITH YOUR PHONE
 NUMBER & LAST NAME

IF OFFICERS RECOVER
 ITEMS BELIEVED TO BE
 STOLEN A SPECIAL
 LIGHT WILL BE USED TO
 REVEAL YOUR
 IDENTIFIER

CONTACT OFFICER
 CALABRO @ 314-444-0169
 FOR DETAILS.



**Contact
 your
 Alderman
 or many
 neighbor-
 hood
 associa-
 tions also
 have pens
 to loan.**

**OR buy
 one and
 offer it to
 your
 neighbors
 to use on
 your
 block!**

Benton Park West

Neighborhood Association
 P.O. 18671
 Saint Louis, MO 63118



On the Web
www.bentonparkwest.org